

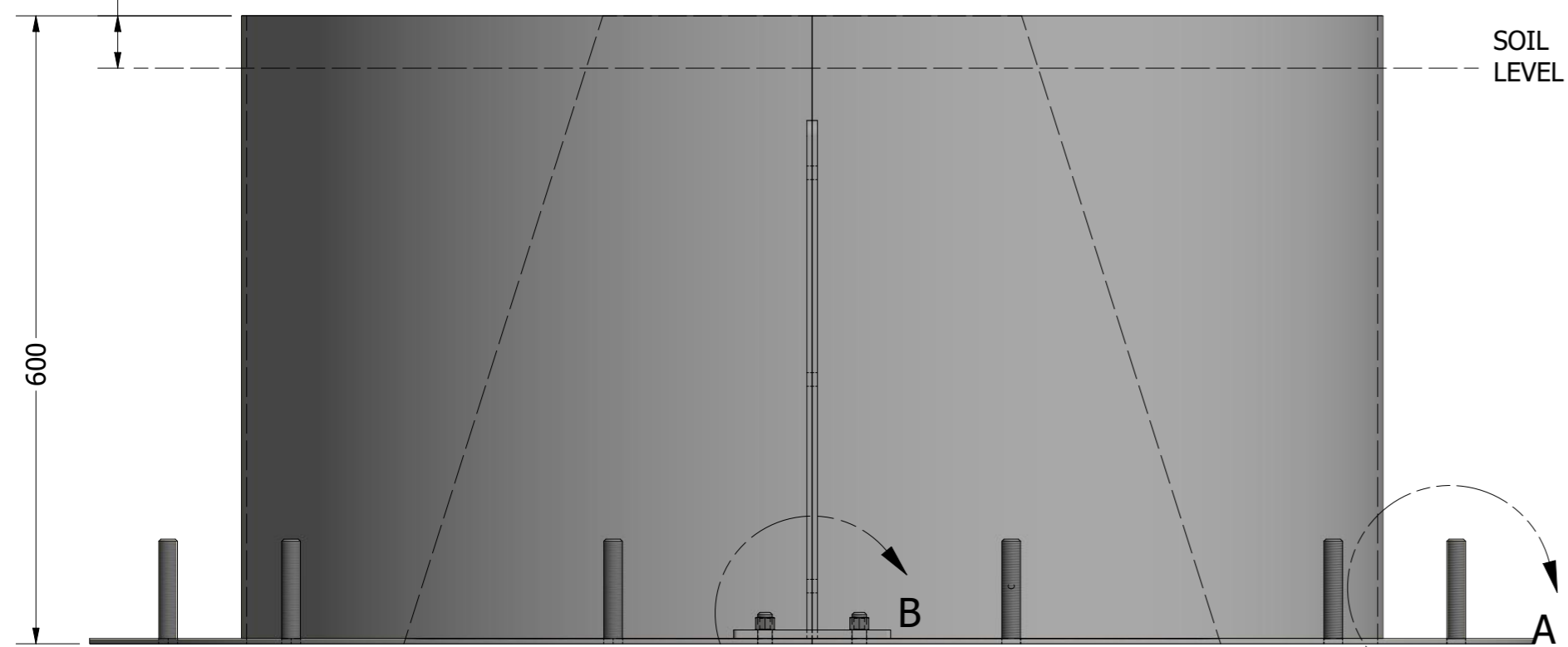
**Tree Diameter
780mm at widest point**

R545.00
O/S

150.00

150.00

50.00

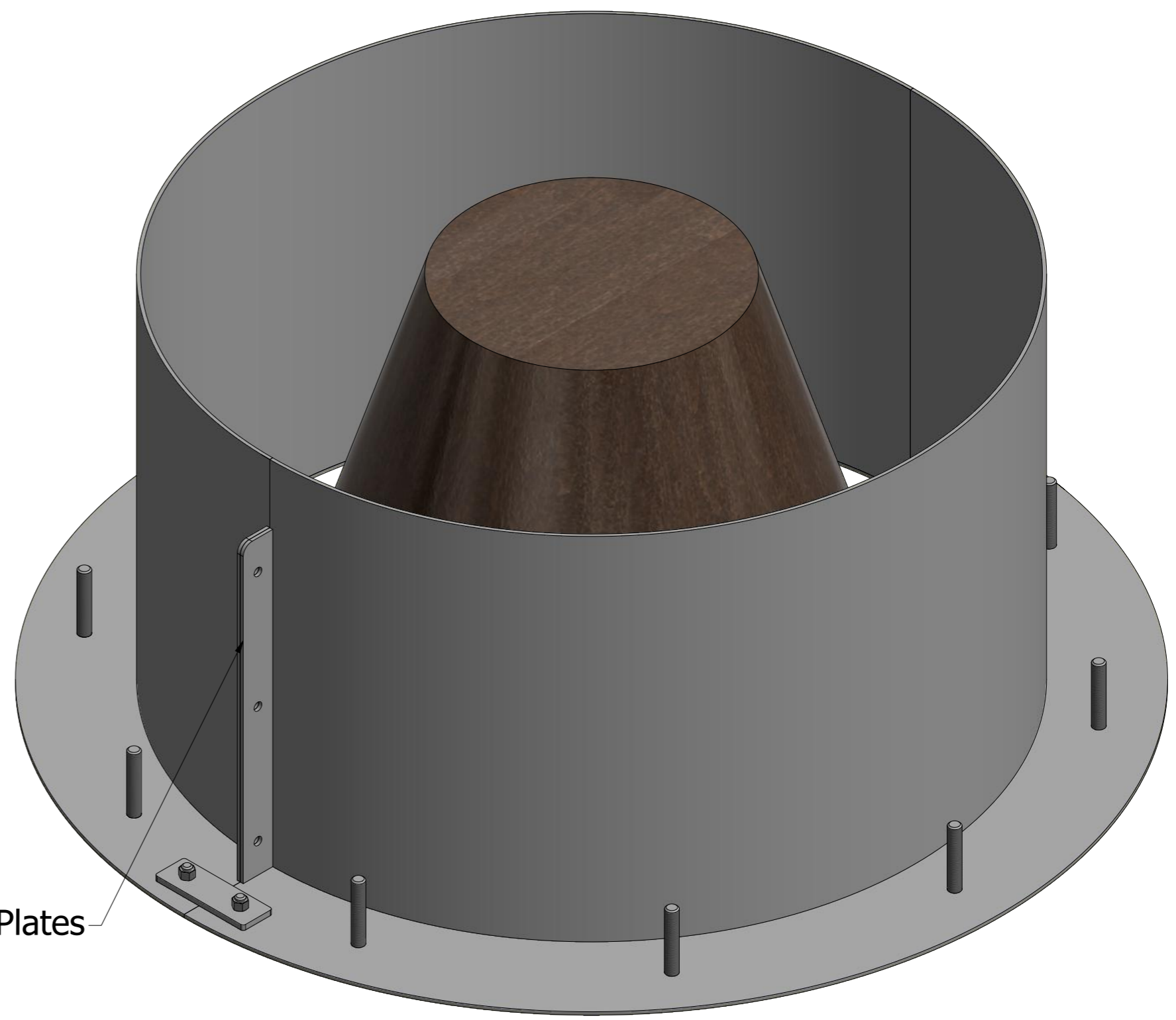


SOIL LEVEL

600

B

A



Joining Plates

Threaded bar welded
to base for keying into
concrete footing.

Threaded bar welded
to base with an on top fixing
for easy insulation.

DETAIL A
SCALE 1 / 2

DETAIL B
SCALE 1 / 2

ALL SCREWS AND BOLTS TO BE 316 GRADE STAINLESS STEEL

URBAN STREET DESIGNS LTD.
ST MARYS STREET, NELSON, BB9 7BA.
TEL: +44 (0)1282 507 656
EMAIL: sales@urbanstreetdesigns.co.uk
WEB PAGE: www.urbanstreetdesigns.co.uk



IF IN DOUBT ASK!

DRAWN BY: Liz
DATE:
SCALE: 1 / 6
PAGE SIZE: A2 PAGE No: 1 / 1

REPORT ALL ERRORS TO DRAWING OFFICE
3RD ANGLE PROJECTION
ALL DIMENSIONS ARE IN MILLIMETRES

URBAN STREET DESIGNS LTD

2015 © Urban Street Designs Ltd All Rights Reserved.
USD. CONFIDENTIAL AND PROPRIETARY. ALL RIGHTS RESERVED. This document (and the information it contains) are the property of USD. By accepting it into your possession, you agree that you will keep this document, and all information contained herein, in strictest confidence, and will not copy, retransmit, use (except solely for the benefit of USD), sell, lend or otherwise dispose of, directly or indirectly, without the express written permission of USD, and this document will be returned to USD immediately upon request.

MATERIAL + SPEC: 316 Stainless Steel
FINISH: 2B
DESCRIPTION/NOTES: National Army Museum - Tree Protector Stainless Steel

DRAWING NUMBER: Tree Protector Stainless Steel REV:
PART NUMBER: Tree Protector Stainless Steel
CUSTOMER REF. DWG No: